

BACKGROUND

The Medicaid Website can be accessed by the general public using the Wyoming Medicaid Website address : <https://www.wyomingmedicaid.com/>

The Medicaid Website offers 3 Primary Menus:

1. Home
2. Provider
3. Member

In addition to the 3 primary menus, the Home Page offers 6 quick access icons, which include:

1. Providers
2. Members
3. Provider Enrollment
4. Provider Publications
5. Provider Training
6. Fee Schedules

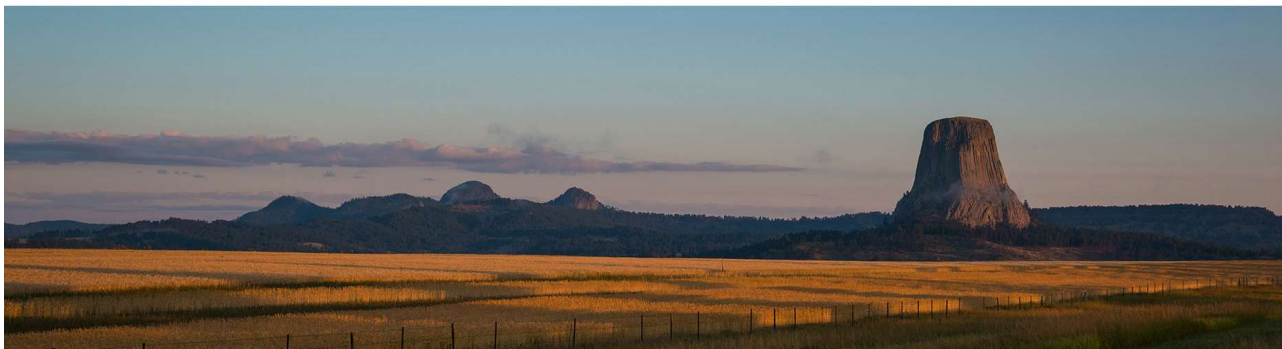


Wyoming Medicaid

Serving Wyoming Medicaid Providers and Members

HOME PROVIDER - MEMBER -

Search 



Providers



Members



Provider
Enrollment



Provider
Publications



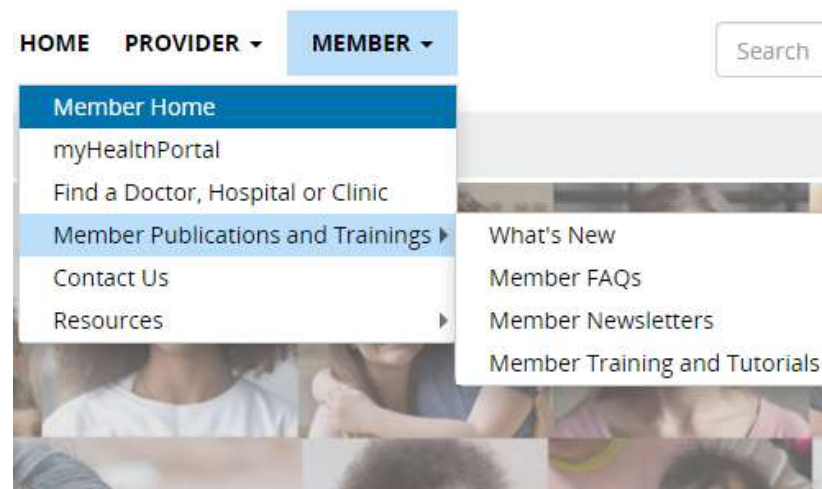
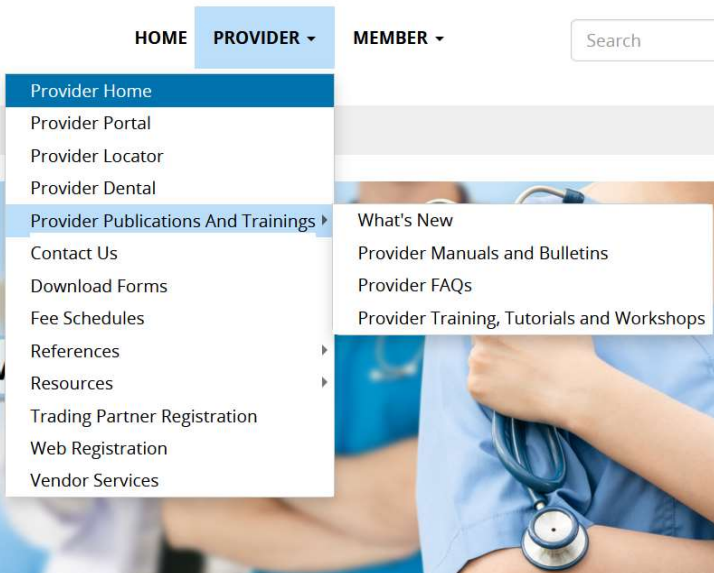
Provider
Training



Fee Schedules

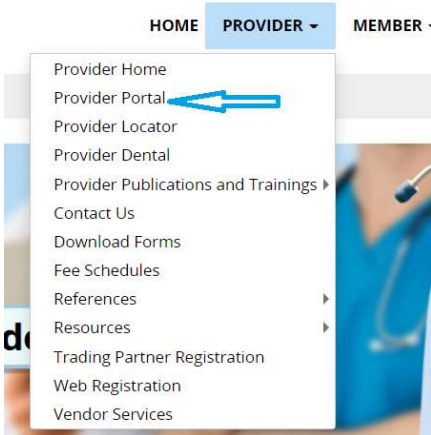
Documents related to Provider and Member will be available on the Medicaid Website:

- Provider Manuals and Bulletins
- Provider Training, Tutorials and Workshop details
- Member Training and Tutorials
- Travel Assistance Manual

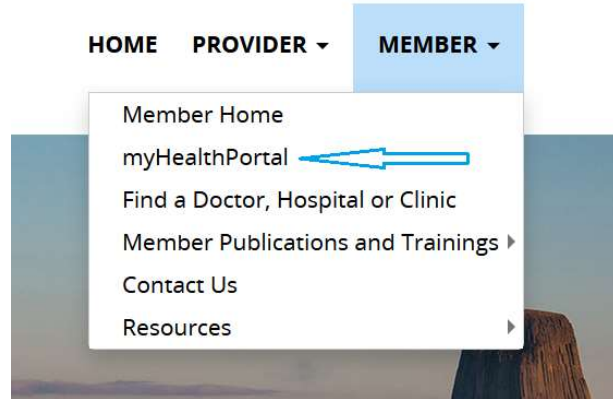


The Website features:

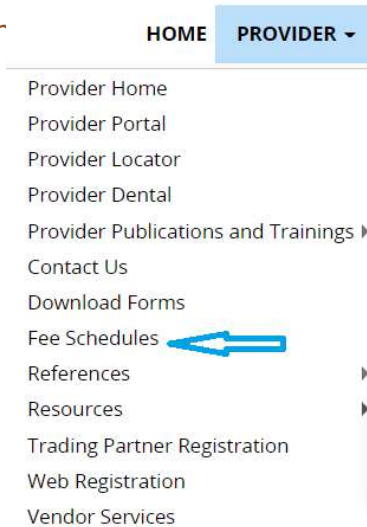
Secured Provider Portal Login



Secured myHealthPortal Login



Fee Schedule Information



Functional Workflow of the Website

